

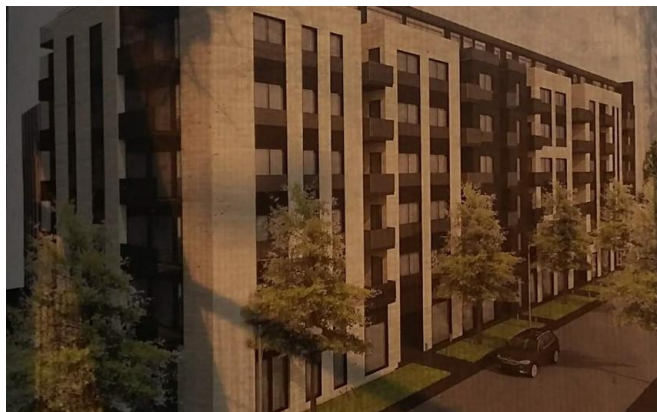


RAVANIČKA

GP GREDA doo

Site of the residential complex

(011) 243 7108, (011) 245 3410



Price: from 1 925 €/sqm
VAT: included
Investor: GP GREDA doo
Location: ZVEZDARA, Lion
Heating: Central, counter
Parking space: Underground
Conditioning: Conditioner installed

Implementation period: 12.2019
Floors: 3Po+Pr+5+Ps
Windows: Wooden-aluminium windows
Floor size: from 35 m²
Documentation: Building permit ROP-BGDU7886-CPIH-3/2018
Commer. premises: Yes
Publ. (upd.): 22.08.2018 (29.03.2019)

Description:

The high-quality new building at the corner of Ravanička and Gospodara Vuchicha in close proximity to residential and commercial buildings built by GP Greda on ul. Gospodara Vučića and st. Vojislava Ilica is all near the market "Cvetkova pijaca". There are four kindergartens, two primary schools, an architectural school, a technical gymnasium, the VI Belgrade gymnasium, the Zvezdara health center, hotels, several supermarkets all close to the complex.

The residential complex, with commercial premises, consists of 3 buildings, has 3 underground levels and 7 floors, a total of 93 apartments 11 commercial premises and 116 parking places. The underground garage on three levels has 101 parking places and 15 parking places are on-site.

Infrastructure

"Ćirilo i Metodije":	1100 m	Duga:	350 m
Cvetkova :	350 m	"Zvezdara":	550 m
Park-šuma Zvezdara:	1400 m	Tempo:	500 m
Trolleybus (№ 19, 21, 22, 29):	200 m	Tram (№ 5, 6, 7, 14):	500 m
Bus (№ 46, 55, 79):	200 m		