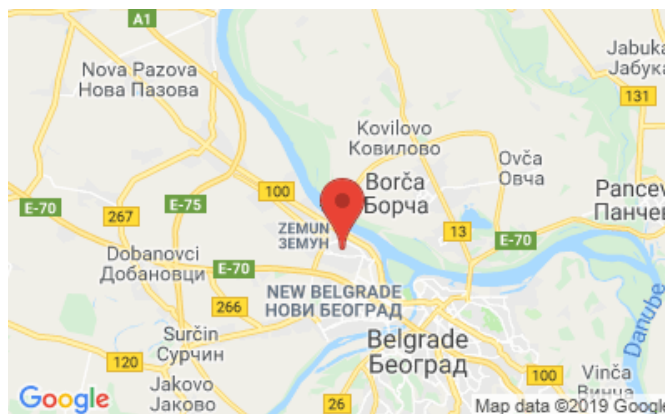
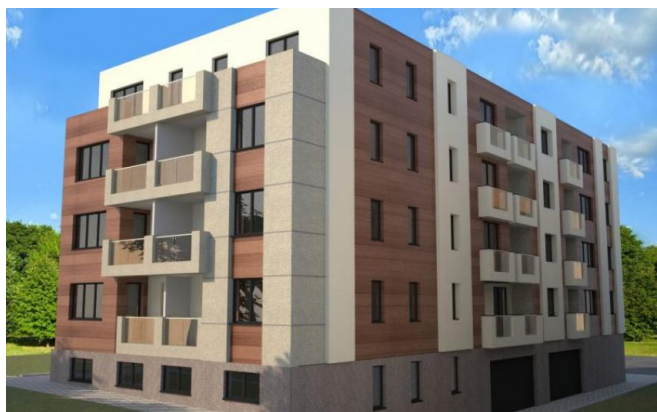




ŠILEROVA 46

Privatni investitori

(064) 007 39 49, (064) 61 44 580



<b>Price:</b>	from 1 600 €/sqm	<b>Implementation period:</b>	09.2019
<b>VAT:</b>	included	<b>Floors:</b>	Po+P+2+Ps
<b>Investor:</b>	Privatni investitori	<b>Windows:</b>	PVC- ALU
<b>Location:</b>	ZEMUN, Naselje Sava Kovačević	<b>Floor size:</b>	from 30 m <sup>2</sup>
<b>Heating:</b>	Heat pump	<b>Documentation:</b>	Building permit ROP-BGDU-13210-CPIH-2/2018
<b>Parking space:</b>	Underground	<b>Publ. (upd.):</b>	12.10.2018 (10.04.2019)
<b>Conditioning:</b>	Heat pump		

### Description:

Residential building on the street. Shilerova in Zemun, 4 floors, 25 apartments, parking in the underground garage.

- Geothermal heating and cooling
- Elevator
- Metal entrance door
- Oak parquet S class
- PVC-Aluminum windows, German profile 6 cameras + aluminum blinds
- With each apartment - parking place

### Infrastructure

<b>Osnovna škola „Petar Kočić“:</b>	650 m	<b>Vrtić Mali Princ:</b>	700 m
<b>Pijaca Gornja Varoš:</b>	1700 m	<b>Dom zdravlja Zemun:</b>	100 m
<b>Park Sava Kovačević:</b>	500 m	<b>Shop:</b>	300 m
<b>Bus (№ 15, 18, 45, 78, 612):</b>	300 m		



---

**Images:**

---

