

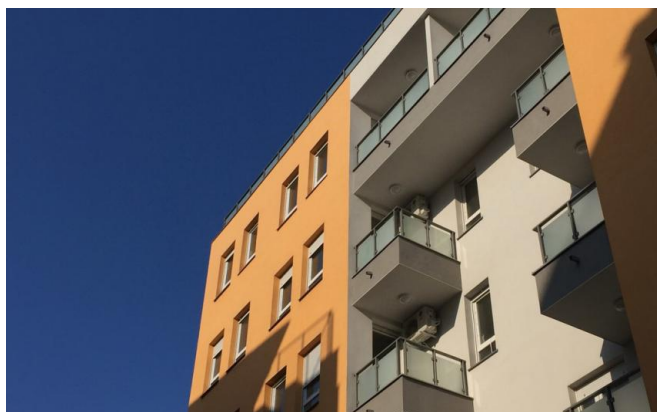


LIRA

[GP Napred ad](#)

[Site of the residential complex](#)

(011) 711 31 81, (011) 711 37 40



| | | | |
|-----------------------------|-----------------------|-------------------------------------|------------------------|
| Price: ----- | On request | Conditioning: ----- | Conditioner installed |
| VAT: ----- | on request | Implementation period: ----- | 2018 |
| Investor: ----- | GP Napred ad | Floor size: ----- | from 34 m ² |
| Location: ----- | ZVEZDARA, Zeleno brdo | Documentation: ----- | Object is legalized |
| Parking space: ----- | Underground | Publ. (upd.): ----- | 29.11.2018 |

Description:

LIRA provides its residents with the comfort and safety of a quality new construction from a reliable investor and performers in combination with all the advantages of an already habitable and urbanized location. In all respects, LIRA is a special residential complex, in particular due to its location - from its height overlooking the entire city - the Eastern Gate of Belgrade, Saint Sava and the Ada Bridge - this is only part of what opens to look out the window. Apartments of all structures: from small one-room to comfortable three-room apartments. The range of areas is from 34 to 82 m², and all types of apartments provide a high level of use and functionality of the living space. On the fifth floor there are 6 penthouse apartments. The building also has an underground garage with 50 parking spaces.

Infrastructure

The advantage of the location is the proximity of all for the necessary quality lifestyle - there are primary and high schools, supermarkets, shops, pharmacies, playgrounds, sports centers and clubs, a gas station, medical facilities, numerous cafes and restaurants, a post office, a bank ... and all that 10 minutes walk. In addition, within 12 minutes on foot you will find yourself in the Cvetkova market and another 5 minutes to the sports center and the Olimp pool. The green oasis of the forest Zvezdara will give you and your family a shelter on hot summer days in Belgrade. The proximity of Kral Alexander and Ustanichka Boulevard provides direct transport links to other parts of the city, as well as to the E-75 highway.

| | | | |
|------------------------------------|--------|---|--------|
| "Desanka Maksimović": ----- | 650 m | Lane: ----- | 1000 m |
| Cvetkova pijaca: ----- | 1400 m | Dom zdravlja "Zvezdara": ----- | 1200 m |
| Park-šuma Zvezdara: ----- | 1500 m | Maxi: ----- | 100 m |
| Tram (№ 5, 6, 7, 14): ----- | 300 m | Bus (№ 20, 50, 308, 351, 355, 356, 363, E1): ----- | 300 m |





Images:

