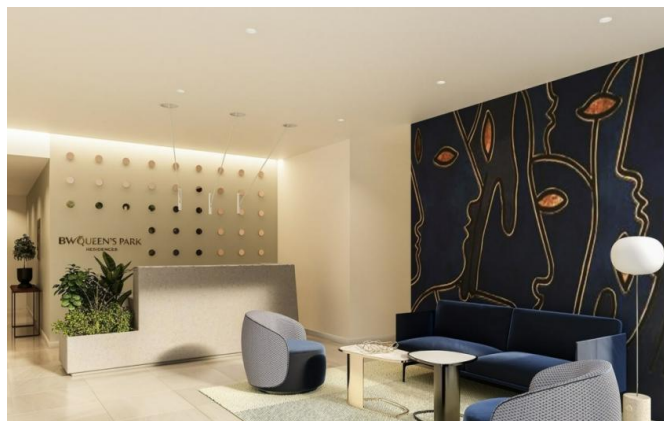


BW QUEEN'S PARK RESIDENCES

Eagle Hills

Site of the residential complex

0800 300 888



Price:	Upon request	Floors:	8
Investor:	Eagle Hills	Floor size:	from 33 m ²
Location:	SAVSKI VENAC, Savamala	Documentation:	Građevinska dozvola
Parking space:	Underground	Commer. premises:	Yes
Conditioning:	Multi-split system	Publ. (upd.):	17.02.2025

Description:

BW Queen's Park Residences is designed to provide its residents with immediate access to the services and amenities they need on a daily basis. Savski Park, the size of four football fields, is practically an extension of the plot on which the building is located.

Alongside Savski Park and the nearby Sava Promenade, a landscaped inner courtyard offers residents numerous opportunities to lead a healthy, active life in harmony with nature. The unique quality of life at BW Queen's Park Residences is permeated through every detail, both in the surroundings and in the interior of the building itself. A school and kindergarten are in the immediate vicinity, as is a future metro station, which will save residents significant time while performing their daily duties.

Infrastructure

BW Queen's Park Residences is designed to provide its residents with immediate access to the services and amenities they need on a daily basis. Savski Park, the size of four football fields, is practically an extension of the plot on which the building is located. Alongside Savski Park and the nearby Sava Promenade, a landscaped inner courtyard offers residents numerous opportunities to lead a healthy, active life in harmony with nature. The unique quality of life at BW Queen's Park Residences is permeated through every detail, both in the surroundings and in the interior of the building itself. A school and kindergarten are in the immediate vicinity, as is a future metro station, which will save residents significant time while performing their daily duties.

Osnovna škola "Isidora Sekulić":	600 m	Vrtić:	100 m
Zelena Pijaca:	200 m	Dom Zdravlja Savski Venac:	1200 m
Sava Promenada:	10 m	Shop:	50 m
Tram (№ 7, 9, 11, 12):	500 m	Bus (№ 78, 83, E1):	500 m

Images:

