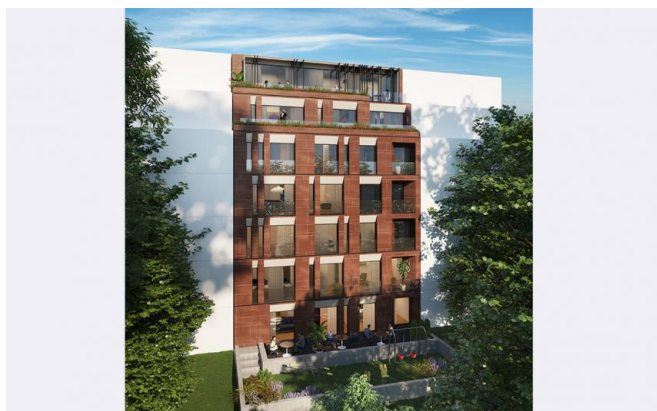


**PREŠEVSKA 45**

Site of the residential complex

+381 64 933 6000; +381 64 933 8000



<b>Price:</b>	On request	<b>Floor size:</b>	from 32 m <sup>2</sup>
<b>Location:</b>	ZVEZDARA, Olimp	<b>Publ. (upd.):</b>	19.03.2025

**Description:**

New attractive multi-storey building on Zvezdara, located in a quiet street of family residence Preševska 45. New residential and commercial building with 3 floors + floor + floor + floor + 4 floors. The future building, with its design, quality, structure of apartments as well as all equipment, follows the standards in the construction of residential buildings.

**Infrastructure**

The equipment of each apartment has been carefully selected to provide superior aesthetics and comfort. ✓ Facade walls of the building (thermal block, stone wool 12 cm, natural stone); ✓ Aluminum carpentry with three-layer low-emission glass, thermal break of 32 mm, aluminum electric blinds and mosquito nets (roll pleats); ✓ Blind doors and room doors from a renowned manufacturer; ✓ Oak parquet from a renowned manufacturer; ✓ Heating system with heat pumps - multi system; ✓ Ceramics and sanitary ware from an Italian or Spanish manufacturer; ✓ Halls and corridors in natural marble, attractive tones; ✓ the building has one passenger and one car elevator, from a renowned manufacturer;

<b>Šesta Beogradska gimnazija,</b>	150 m	<b>Kindergarten:</b>	150 m
<b>Osnovna skola Veljko Dugosevic:</b>		<b>Zvezdara:</b>	1000 m
<b>Trolleybus (№ 40, 28):</b>	200 m	<b>Maxi:</b>	250 m
<b>Bus (№ 77, 64):</b>	200 m	<b>Tram (№ 71, 14, 5, 6):</b>	500 m